



KONICA MINOLTA



**LINKCOM IV: PRINTING & CONVERSION SOLUTIONS**



# LINKCOM IV

## OVERVIEW

LinkCom IV® makes connection of Page- and Line printers to complex LAN environments easier than ever, as LinkCom IV simply is connected to the parallel port or the USB port of the printer and to the LAN. By a simple configuration using PrintGuide or a web browser, both the IBM systems and standard LAN/PC environment can make full use of all features on the printer, including MFP functionalities. You can even connect 2 printers to each LinkCom IV in order to save connectivity costs. Redirection of one output to a network connected printer is provided as standard. Redirection of up to 3 outputs to network is available as an option.



## The most **flexible solution** for direct connection of industry standard laser and matrix printers to IBM systems

### WORKS EFFICIENTLY WITHIN MIXED HOST/LAN ENVIRONMENT

LinkCom IV is developed to work efficiently within the mixed Host/LAN environment and supports SNA and TCP/IP sessions directly from the IBM systems as well as TCP/IP sessions from the LAN. The LinkCom IV will convert IBM SCS/DCA and IPDS to the industry standard PCL5 or Postscript language used by the majority of printers today. And even translation from SCS/DCA to Page- and Line printers is provided as a standard.

### PLUG 'N PRINT INSTALLATION

LinkCom IV offers easy Plug 'n Print installation for the AS/400 environment using the TN5250e. TN3270e allows mainframe users to migrate SCS/DCA data stream to LAN in an easy manner. For LAN administration and setup there are several tools available.

### FAST AND EASY CONFIGURATION

For fast and easy configuration LinkCom IV is delivered with MPI Tech's PrintGuide. Also a standard web browser will access the internal html-pages of the LinkCom IV. Alternatively the Hewlett-Packard Web JetAdmin or a simple Telnet session can be used.

Support for PoE allow for utilizing power supplied via the network herewith eliminating the need for for an external power supply and minimizing the number of cables. LinkCom IV also provides elegant features such as status reporting directly to the person responsible for the printer.

### PRINT SERVER

- The ideal solution for IBM printing in a LAN environment
- Full IPDS color support
- Converts both AFP/IPDS and SCS/DCA to laser printers
- Centronics, USB and LAN printer connection
- Output to network connected printers using TCP/IP
- Supports both TCP/IP and SNA sessions to the host
- TN5250e/TN3270e support
- Support for PoE (Power over Ethernet)
- Printer management using MPI Tech PrintGuide or web browser
- Password protected set-up

## NETWORK ATTACHMENT

### Ethernet

100BASE-TX at 100 Mbps  
10BASE-T at 10 Mbps

## SYSTEM SUPPORT

### OS

Windows (Vista, Server 2003, XP, 2000, ME, NT, 9x), UNIX, Novell, Mac, 3.1x / 4.xx, 5.0, DOS, OS/2, HP-UX, AIX, IBM OS/400, OS/390, z/OS, MVS, VM, VSE

### Protocols

SNA, TCP/IP, (PPD, LPR, Port 9100), NetBIOS/NetBEUI, IPX/SPX using bindery or NDS support. Appletalk, FTP, IPP.

### IBM Host system support

IBM zSeries, S/370, S/390 (MVS/VM/VSE), IBM AS/400, iSeries, i5

## MINIMUM SYSTEM REQUIREMENTS (IPDS)

PSF/MVS Rel. 2.1 or higher  
PSF/VM Rel. 2.1 or higher  
PSF/VSE Rel. 2.2.0 or higher  
GDDM 3.1  
PSF/400 Rel. 3.1 or higher  
InfoPrint Manager for Windows Ver 2R2  
InfoPrint Manager for AIX ver 4R2

## PRINTER ATTACHMENT

Parallel, USB and LAN

## EMULATION

### IPDS

IBM IP40, 4028 (3916/3912, 3116/3112), 3812, 3816  
(PCL and PostScript output only)

### SCS

3270: 4028, 3287, 3268, 4214-1  
5250: 4234, 5224, 5225, 5256

### DCA

5250: 5219/3812

## PRINTERS SUPPORTED

### Up to two printers with:

PCL 5/5c,  
PostScript L2/L3,  
IBM ProPrinter  
or Epson FX/LQ

## PRINTER CONNECTION

Parallel port, USB output port  
or Network port via TCP/IP

Redirection of the Centronics port to network  
using TCP/IP port 9100.

Selectable via PrintGuide or Web browser

### Optional

Up to three simultaneous inputs and outputs  
to TCP/IP Network connected printers.  
High speed options

## FEATURES

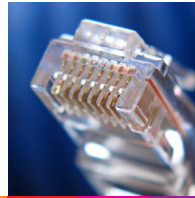
Multi session/multi protocol support, dynamic  
PC printer share, pre, post and replacement  
string facility, Firmware upgrade via PrintGuide™,  
Password protected setup.

### SCS/DCA features

MPI Tech FSL facility, Advanced font handling,  
Multiple page formats, Automatic page  
orientation, Advanced paper size handling,  
Internal barcode generation, MPI Tech  
PSS/EPM AFP software support.

### IPDS features

Full IPDS support, Up to 55ppm  
(High Speed options available). Full color printing  
incl FS45, JPG, JFIFF and Object Container  
support. 2D barcode, True-page counters, Double  
byte font (DBCS) support, Page offset functions.  
IBM IP40, 4028 & IBM 3812/3816 resident font  
sets. Downloadable IPDS font set. Outline font  
support, 240, 300 and 600 dpi support.



## SET-UP

MPI Tech PrintGuide™ (Windows)  
Web browser (HTML),  
Auto-configuration  
DHCP server  
TELNET

## REGULATORY INFORMATION

### Safety

2006/95/EC - Low voltage directive:  
En60950-1:2006  
IEC 60950-1 Ed. 2.0:2005, UL 60950-1 2nd  
edt, (CAN/CSA-C22.2 No. 60950-1-07)

### EMC

2004/108/EC - EMC directive:  
EN 55022: 2006, Class B  
EN 55024: 1998 + A1:2001 + A2:2003  
FCC 47 CFT Part 15, Class A

### Environmental

2002/95/EC - RoHS directive  
2003/108/EC - WEEE directive  
2006/122/EC - PFOS directive  
2006/1907/EC - REACH directive

## WARRANTY

3 years manufacturing fault warranty

## SIZE / WEIGHT

235 x 165 x 30mm / 9.3 x 6.5 x 1.2"  
Weight: 385g / 13.6oz / 0.8lb

## POWER REQUIREMENTS

5 VDC @ 500mA (Power supply incl.) or  
PoE (Power over Ethernet) class 1





## PRODUCT NAME

## DESCRIPTION

LinkCom IV	External PrintServer for 2 printers
LinkCom IV SCS/DCA	External PrintServer for 2 printers
LinkCom IV SCS/DCA + IPDS	External PrintServer for 2 printers
LinkCom IV IPDS full color	External PrintServer for 2 printers
LinkCom IV SCS/DCA + IPDS full color	External PrintServer for 2 printers
LinkCom IV SCS/DCA + H2N x 3	External PrintServer for 3 printers
LinkCom IV IPDS SCS/DCA + H2N x 3	External PrintServer for 3 printers

## MPI TECH OFFICES

### France

40, rue du Général Malleret Joinville  
BP 88 - 94402 Vitry sur Seine Cedex  
Phone: +33 (0)1 4573 0940  
Fax: +33 (0)1 4680 7071  
Email: sales.fr@mpitech.com

### Denmark

Vadstrupvej 35  
DK-2880 Bagsvaerd  
Phone: +45 4436 6000  
Fax: +45 4436 6111  
Email: sales.dk@mpitech.com

### United Kingdom

Gibbs House, Kennel Ride, Ascot  
Berkshire SL5 7 NT  
Phone: +44 (0)1 344 89 10 08  
Fax: +44 (0)1 344 89 09 08  
Email: sales.uk@mpitech.com

### Germany

Bavariastrasse 7a  
D-80336 Muenchen  
Phone: +49 (0)89 35 4762 20  
Fax: +49 (0)89 35 4762 11  
Email: sales.de@mpitech.com

### North America - West Coast

4952 Warner Avenue, Suite 301  
Huntington Beach, CA 92649-5506  
Phone: +1 (714) 840 8077  
Fax: +1 (714) 840 2176  
Email: sales.us@mpitech.com

### North America - East Coast

901 North Stuart Street, Suite 1105  
Arlington, VA 22203  
Phone: +1 (703) 243-3322  
Fax: +1 (703) 243-3305  
Email: sales.us@mpitech.com



KONICA MINOLTA

KONICA MINOLTA  
BUSINESS SOLUTIONS  
U.S.A., INC.

100 Williams Drive  
Ramsey, NJ 07446

[www.kmbs.konicaminolta.us](http://www.kmbs.konicaminolta.us)



LinkCom IV

D16130-002 Company and product names mentioned in this text are trademarks or registered trademarks of their respective owners. MPI Tech A/S cannot be held responsible for any technical or typographical errors and reserves the right to make changes to products and documentation without prior notification.